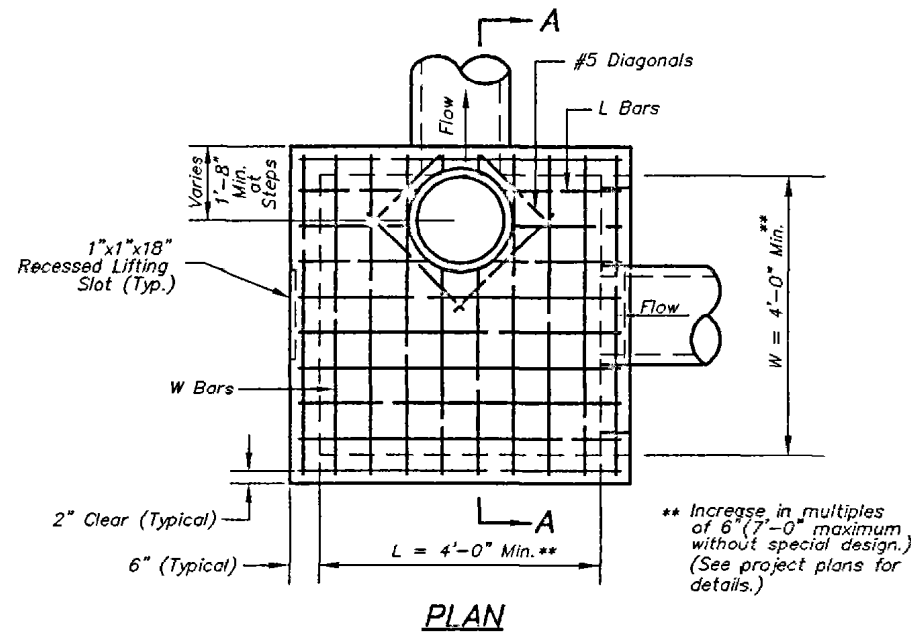
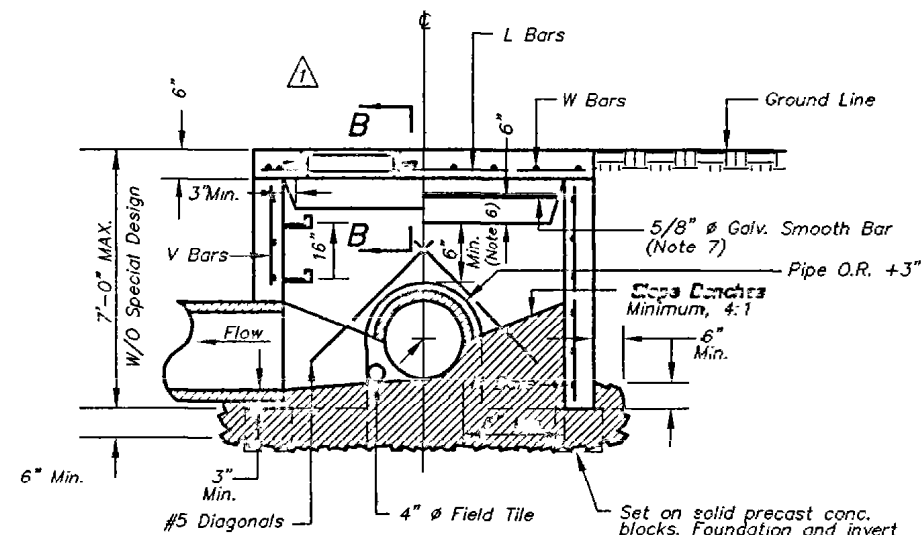


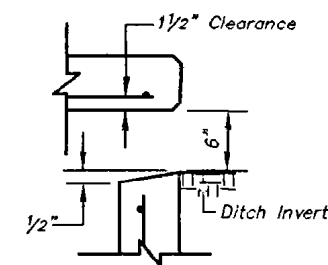
CORNER DETAIL



PLAN



SECTION A-A
(Precast - See Note 12)



SECTION B-B

REINFORCING

BAR'S	BAR SIZE	SPACING (IN.)
H	4	12
V	4	12
L	5	6
W	5	6

GENERAL NOTES:

1. Locate ring and cover over outlet.
2. All work and materials shall conform to APWA Sect. 2600.
3. Use 3/4" chamfer strip or 1/2" edger tool on all exposed concrete corners, including bottom of top slab at the openings.
4. Steps required at 16" O.C. when depth from top of casting to invert exceeds 4'.
5. Boxouts will not be allowed to project through the corners of the structure, and the minimum distance between box outs is 6" with 1 corner bar.
6. The minimum reinforcing shall be 1 H-bar over a cast-in place pipe and 2 H-bars over a precast boxout.
7. Limit opening height to 6" with 5/8" ϕ galvanized smooth bars extending to corner rebars.
8. Show field inlet orientation on plans plus number and size of openings. Locating point at center of structure.
9. O.R. = outside pipe radius
10. Use KCMO Standard MH-RC ring and cover Type 4.
11. 4" ϕ field tile or precast hole shall be located at entering pipes. These tiles or openings shall be capped with 1/4" galvanized wire mesh on the outside of the inlet and clear the invert and base concrete.
12. For cast-in-place structures, V bars shall extend 3" into base and clear soil by 3", add 2-#5 diagonal bars under pipes, and the invert may be poured separate (3" Min.).

7/1/83 KCMO STD. DRAWING SUPPLEMENT

ADOPTED: DIRECTOR OF PUBLIC WORKS

AMERICAN PUBLIC WORKS ASSOCIATION

KANSAS CITY METROPOLITAN CHAPTER

FIELD INLET DETAILS

STANDARD DRAWING NUMBER FI-1
 ADOPTED: APRIL 17, 1983