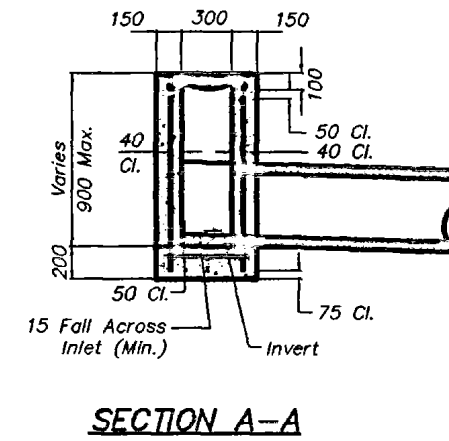
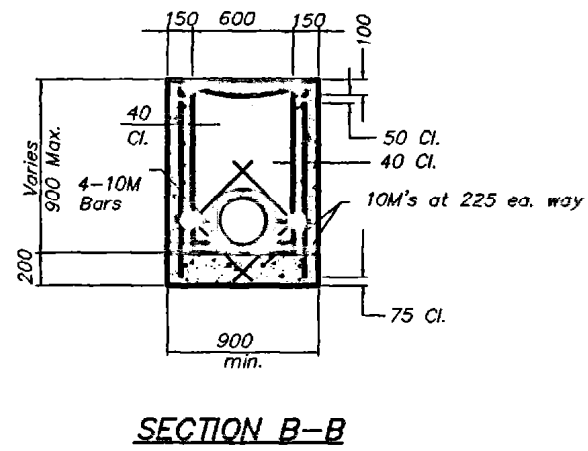
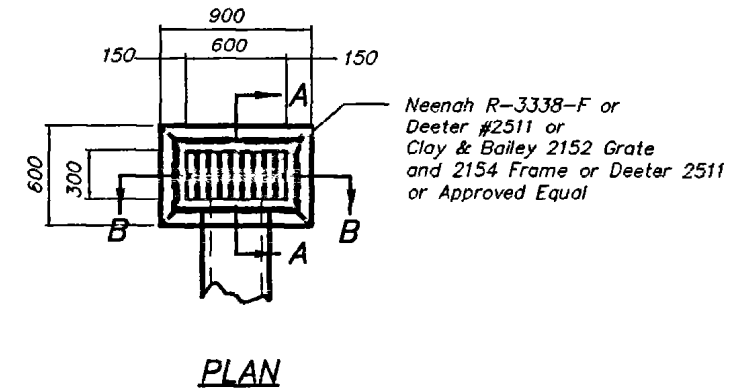


DOUBLE GRATE INLET DETAILS

NOTE:

1. Location point at center of inlet.
2. A separate top slab may be utilized.
3. Not recommended for use in areas with bicycle traffic.
4. All work shall conform to APWA Section 2600.
5. Pour base and invert monolithic for precast inlets.



SINGLE GRATE INLET DETAILS

Note: All units are in millimeters.

| | |
|--|---|
| AMERICAN PUBLIC WORKS ASSOCIATION | |
| APWA | KANSAS CITY METROPOLITAN CHAPTER |
| GRATE INLET DETAILS (METRIC) | STANDARD DRAWING NUMBER G-1(M) ADOPTED: APRIL 17, 1993 |