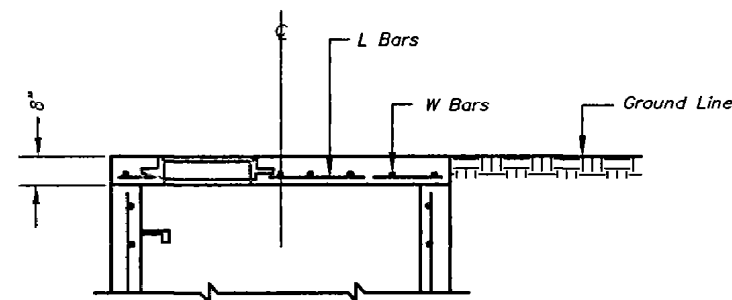
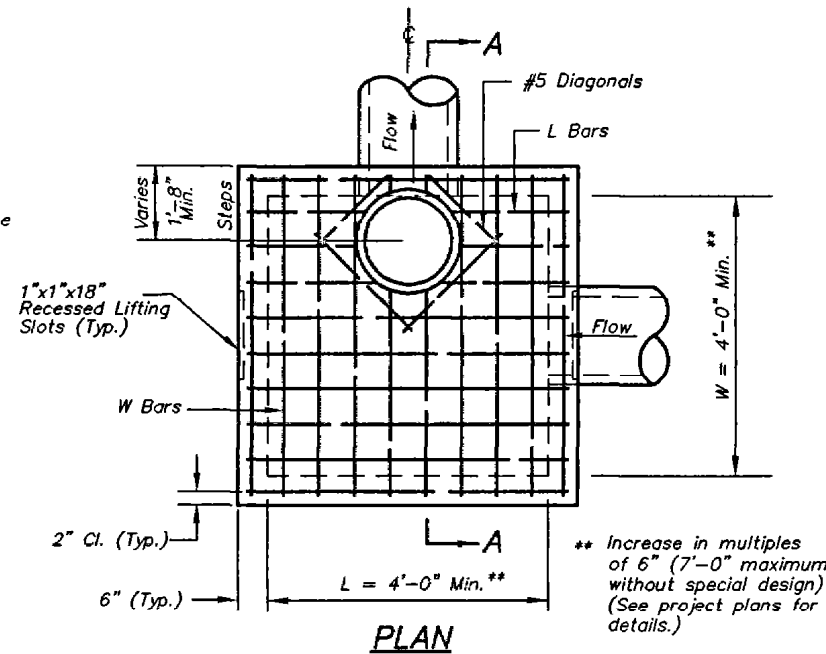


CORNER DETAIL



SLAB TOP ALTERNATE FOR JUNCTION BOX (SHALLOW)

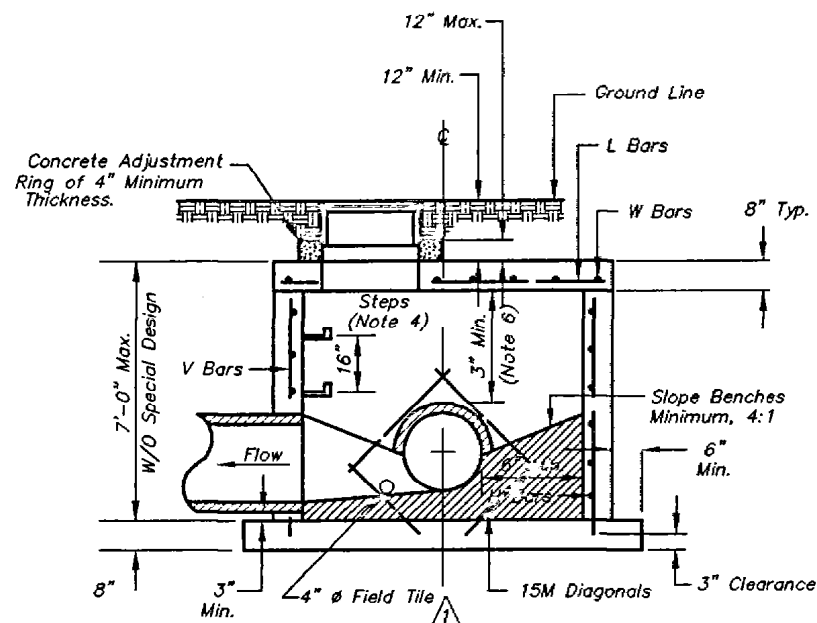
NOTE: Use KCMO Standard MH-RC Type 4 ring and cover.



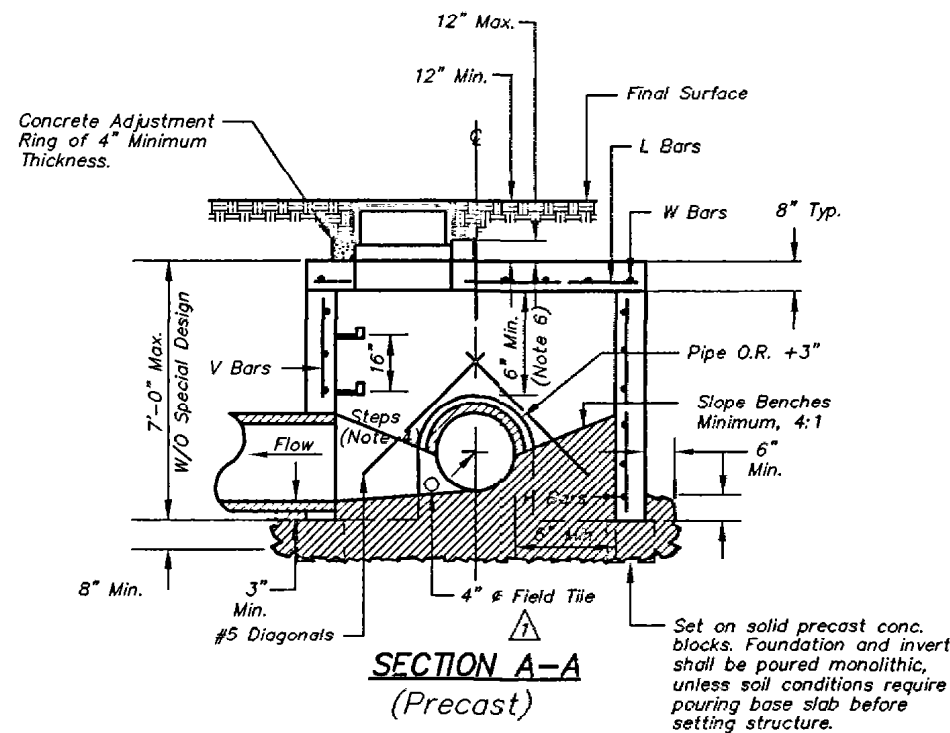
PLAN

GENERAL NOTES:

1. Locate ring and cover over outlet.
2. All work and materials shall conform to Section 2600 APWA.
3. Use 3/4" Chamfer strip or 1/2" R edger tool on all exposed concrete corners.
4. Steps required at 16" O.C. when depth from top of casting to invert exceeds 4'.
5. Boxouts will not be allowed to project through the corners of the structure and the minimum distance between boxouts is 6" with 1 corner bar.
6. The minimum reinforcing shall be 1 H-Bar over a cast-in place pipe and 2 H-Bars over a precast boxout.
7. Show orientation on plans. Locating point at center of structure.
8. O.R. = one half outside pipe diameter (O.D.).
9. Reinforcing of covers in streets require special design.
10. Use KCMO Standard MH-RC Type 3 ring and cover.
11. 4" field tile shall be located at entering pipes. These 4" field tiles shall be capped with 1/4" galvanized wire mesh on the outside of the structure and clear the invert and base concrete.



**SECTION A-A
(Cast In Place)**



**SECTION A-A
(Precast)**

REINFORCING

BARS	BAR SIZE	SPACING (IN.)
H	4	12
V	4	12
L	5	6
W	5	6

7/1/93 KCMO STD. DRAWING SUPPLEMENT

ADOPTED: DIRECTOR OF PUBLIC WORKS

AMERICAN PUBLIC WORKS ASSOCIATION

KANSAS CITY METROPOLITAN CHAPTER

JUNCTION BOX DETAILS

STANDARD DRAWING NUMBER JB - 1
ADOPTED: APRIL 17, 1993