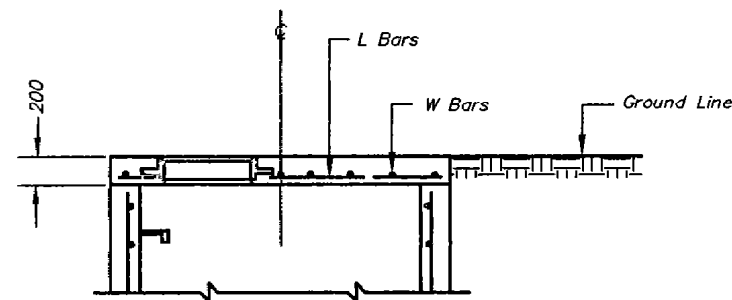
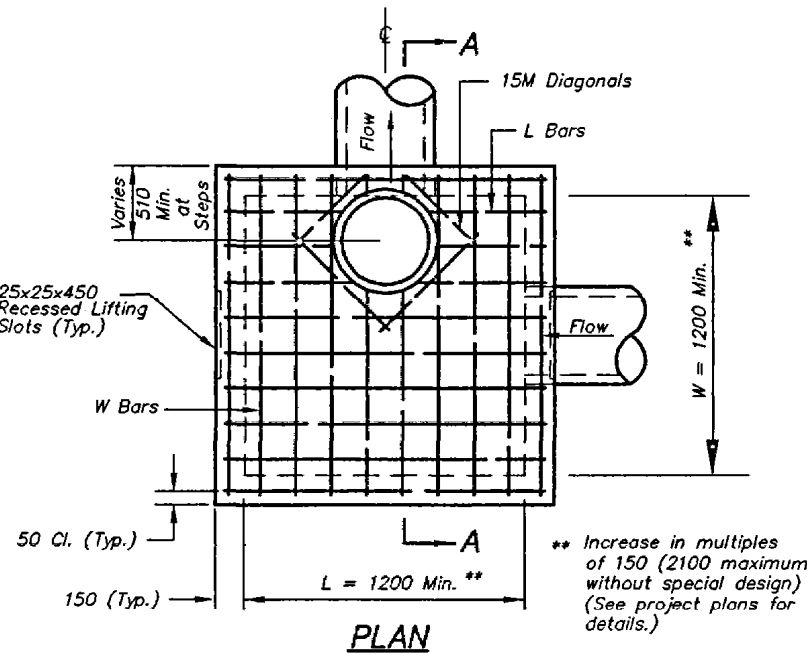


CORNER DETAIL



SLAB TOP ALTERNATE FOR JUNCTION BOX (SHALLOW)

NOTE: Use KCMO Standard MH-RC ring and cover Type 4.

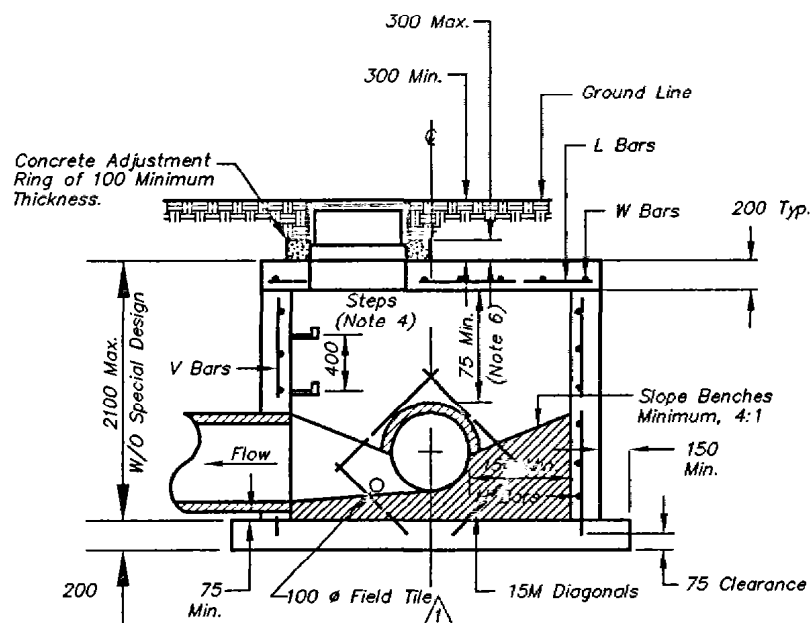


PLAN

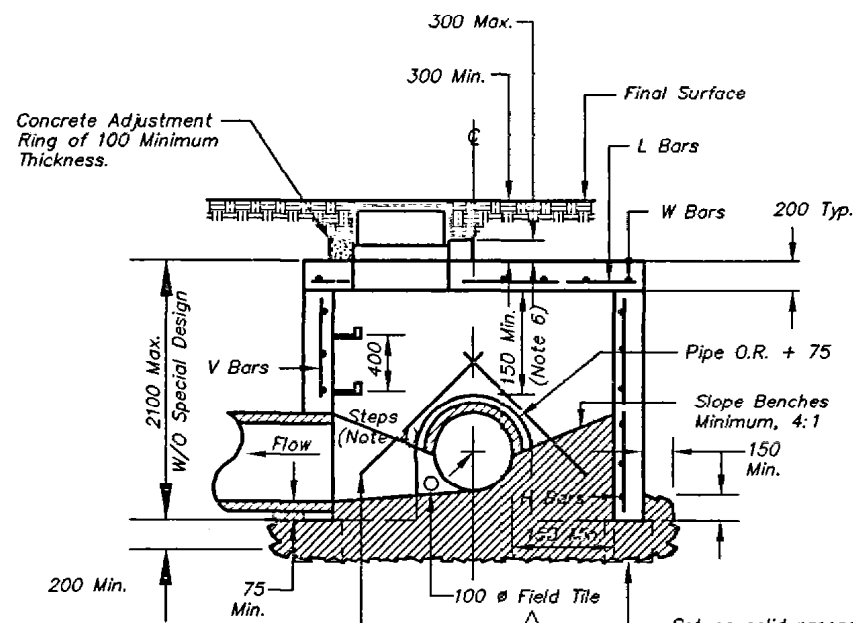
** Increase in multiples of 150 (2100 maximum without special design) (See project plans for details.)

GENERAL NOTES:

1. Locate ring and cover over outlet.
2. All work and materials shall conform to Section 2600 APWA.
3. Use 20 Chamfer strip or 10 edger tool on all exposed concrete corners.
4. Steps required at 400 O.C. when depth from top of casting to invert exceeds 1200.
5. Boxouts will not be allowed to project through the Corners of the structure and the minimum distance between boxouts is 150 with 1 corner bar.
6. The minimum reinforcing shall be 1 H-Bar over a cast-in place pipe and 2 H-Bars over a precast boxout.
7. Show orientation on plans. Locating point at center of structure.
8. O.R. = one half outside pipe diameter (O.D.).
9. Reinforcing of covers in streets require special design.
10. Use KCMO Standard MH-RC ring and cover Type 3.
11. 100 field tile shall be located at entering pipes. These tiles shall be capped with 6 galvanized wire mesh on the outside of the structure and clear the invert and base concrete.



SECTION A-A (Cast In Place)



SECTION A-A (Precast)

REINFORCING

BARS	BAR SIZE	SPACING (mm)
H	10M	300
V	10M	300
L	15M	150
W	15M	150

NOTE: All dimensions in millimeters.

7/1/83 KCMO STD. DRAWING SUPPLEMENT

ADOPTED: DIRECTOR OF PUBLIC WORKS

AMERICAN PUBLIC WORKS ASSOCIATION

KANSAS CITY METROPOLITAN CHAPTER

JUNCTION BOX DETAILS (METRIC)

STANDARD DRAWING NUMBER JB - 1(M)
ADOPTED: APRIL 17, 1983