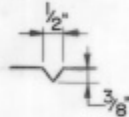
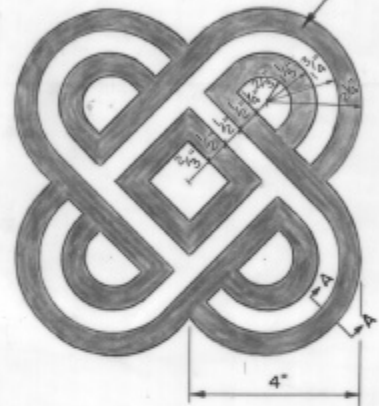


**EMBOSSSED RUNNING BOND PATTERN**  
**PCC TYPE "A" & "B" BARRIER**  
 NO SCALE



**TYPICAL DEPRESSED AREA**  
**SECTION A-A**  
 NO SCALE

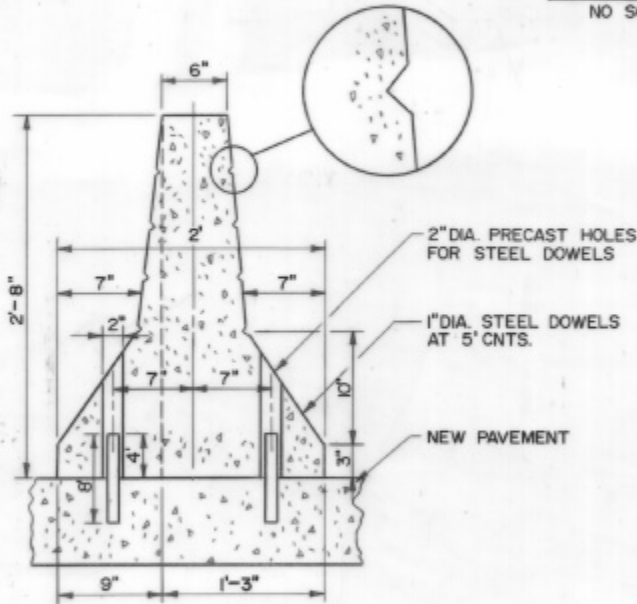
DEPRESSED AREAS ARE SHADED



**KANSAS CITY LOGO**  
 NO SCALE

**NOTES:**

1. CONCRETE BARRIER SHALL BE CONSTRUCTED AND INSTALLED IN CONFORMANCE WITH MISSOURI HIGHWAY AND TRANSPORTATION COMMISSION STANDARD DRAWING NO. 617.00T. "CONCRETE BARRIER TYPE A & B" OR THE LATEST REVISED EDITION.
2. IN ORDER TO OBTAIN PROPER ALIGNMENT, PRECAST BARRIER SECTIONS SHALL BE INSTALLED ON A BED FORMED OF DRY CEMENT.



**EMBOSSSED TYPE "A" & "B" BARRIER DETAIL**  
 NO SCALE

ADOPTED

DIRECTOR OF PUBLIC WORKS \_\_\_\_\_ DATE \_\_\_\_\_

ENTRY NUMBER: 860647 \_\_\_\_\_

APPROVED: \_\_\_\_\_

CITY ENGINEER \_\_\_\_\_ DATE \_\_\_\_\_

REV.	DESCRIPTION	DATE	BY
<b>KANSAS CITY, MISSOURI</b> <b>PUBLIC WORKS DEPARTMENT</b> <b>ENGINEERING DIVISION</b>			
<b>KANSAS CITY</b> <b>CONCRETE BARRIER</b> <b>TYPE "A" &amp; "B"</b>			
DWN BY: DMC		CHKD BY: EPG	DATE: 10-86
SCALE: NONE		DWG. NO. B-KC	
ORDER NO.			