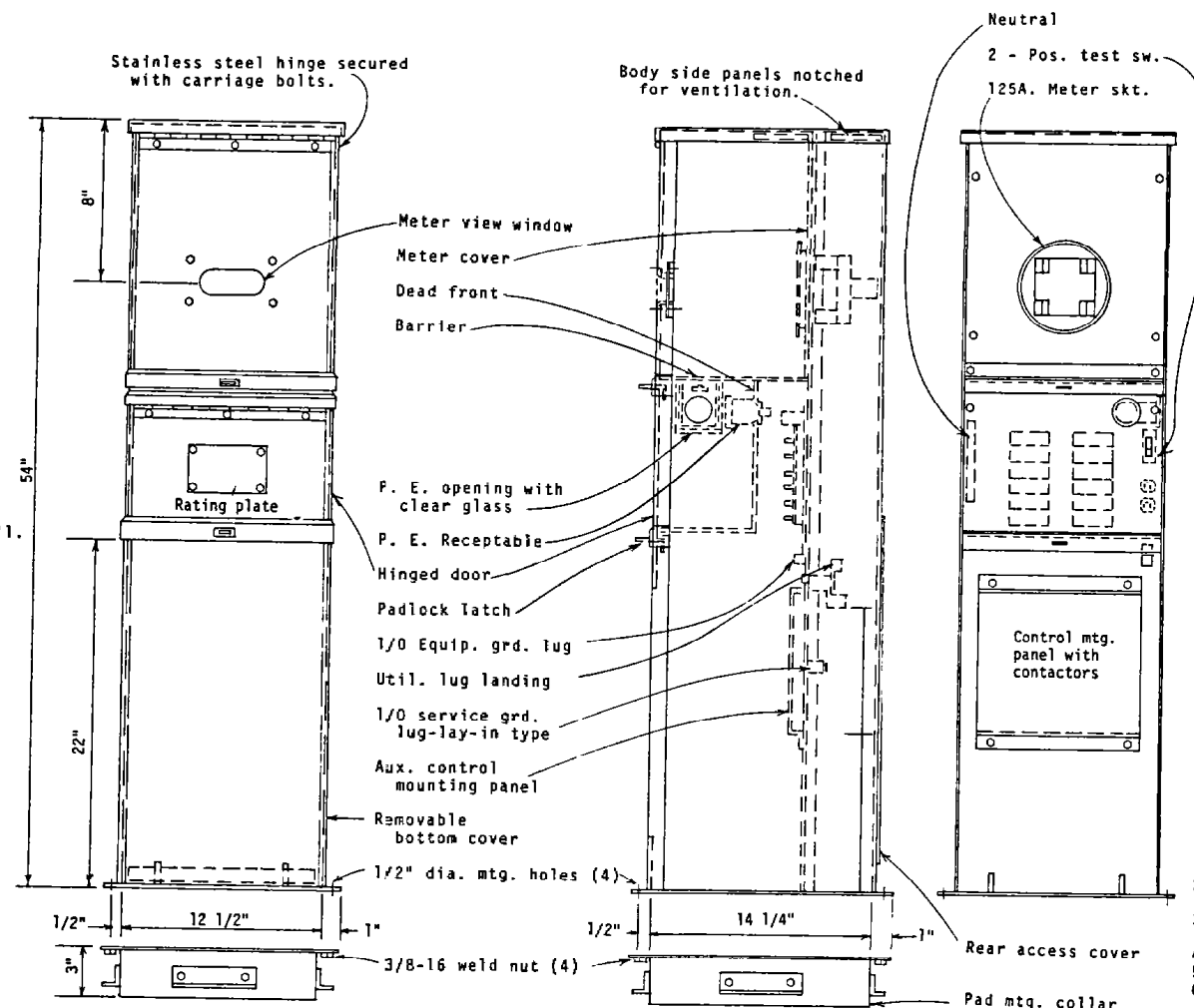
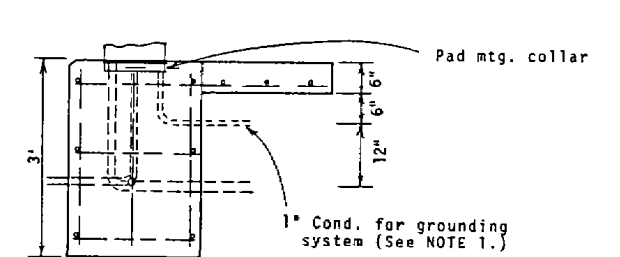


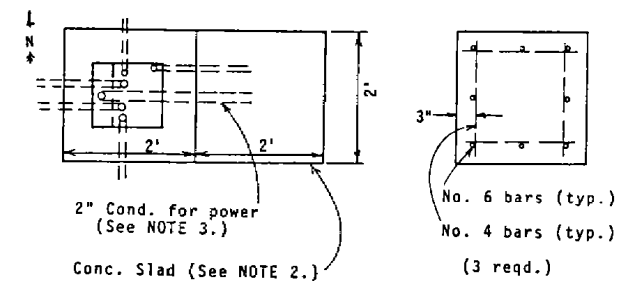
WIRING DIAGRAM



CONTROLLER PEDESTAL
MYERS # MEUG-M100-OPK
(OR APPROVED EQUAL)



SECTION



PLAN

SECTION

FOUNDATION

- 1) PROVIDE GROUND ROD(S) AS REQUIRED FOR MAXIMUM OF 25 OHMS RESISTANCE TO GROUND. EXOTHERMIC WELD ONE END OF NO. 6 AWG GROUND CONDUCTOR TO THE GROUND ROD(S) AND BRUSH ON 2 COATS OF AN INSULATING VARNISH TO THE WELDED AREAS.
- 2) CONCRETE SLAB TO PROVIDE SEMI-DRY WORKING AREA IN FRONT OF CONTROLLER CABINET.
- 3) KCP&L TO INSTALL SECONDARY POWER SERVICE (DIRECT BURY) THRU CONTRACTOR INSTALLED 2" CONDUIT AND ELBOW.
- 4) CODE GA. CORROSION RESISTANT JET-COAT STEEL CONSTRUCTION.
- 5) VENTILATED CONSTRUCTION ASSURES CONDENSATION FREE OPERATION.
- 6) COPPER BUSSED CIRCUIT BREAKER INTERIOR WITH PROVISIONS FOR TWELVE FULL ON INCH POLES.
- 7) ALL TERMINALS APPROVED COPPER OR ALUMINUM WIRE.
- 8) ALL WIRING TO BE COPPER, FACTORY INSTALLED.
- 9) HINGED WEATHERPROOF DOOR WITH PADLOCK PROVISION.
- 10) STANDARD FINISH: ENVIRONMENTAL GREEN BAKED ENAMEL CONFORMING TO ASTM-B117 SPECIFICATIONS, OVER CORROSION RESISTANT ZINC CHROMATE PRIMER.



AMERICAN PUBLIC WORKS ASSOCIATION
KANSAS CITY METRO CHAPTER

STREET LIGHTING
FEED POINT, TYPE B

STANDARD DRAWING
NUMBER SL-2
ADOPTED:
DECEMBER 15, 1982