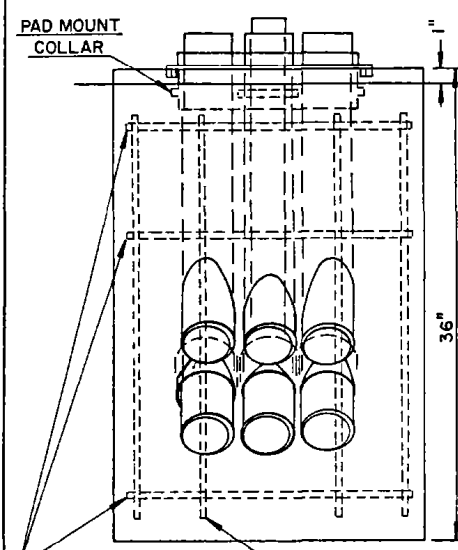


SEE SECTION A A NOTE BEFORE INSTALLING DUCTS

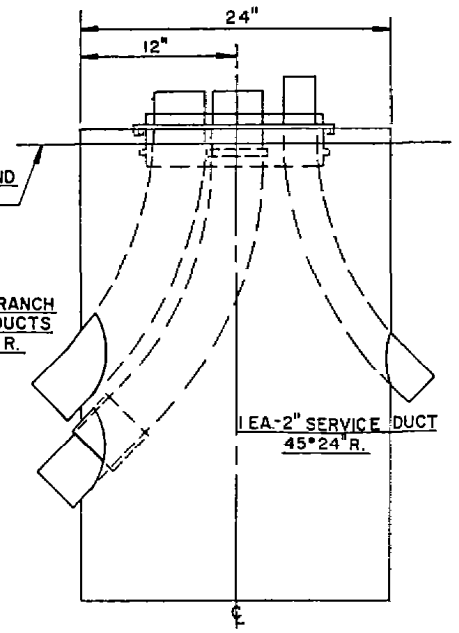
TAPER PLUG SPARE DUCTS AT BOTH ENDS

PLAN VIEW

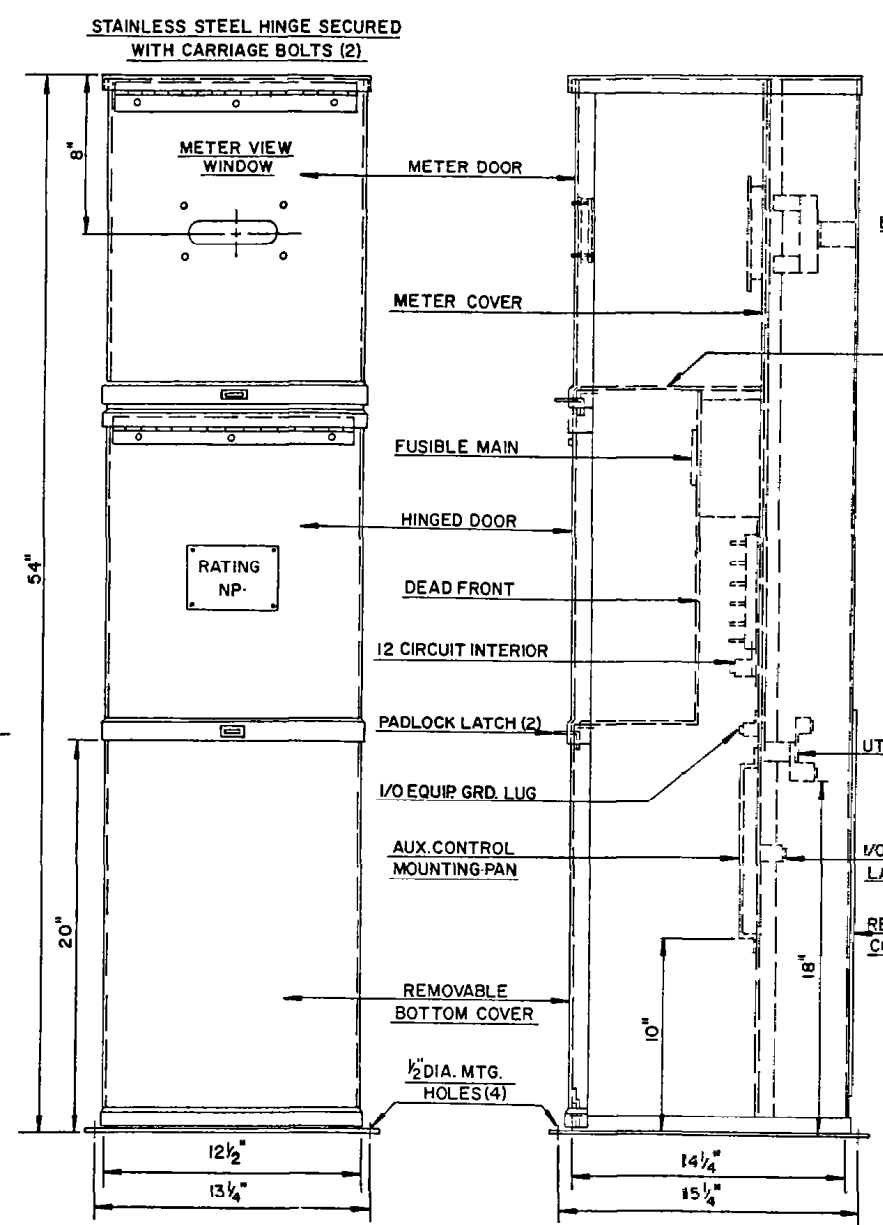


FRONT VIEW

FOUNDATION



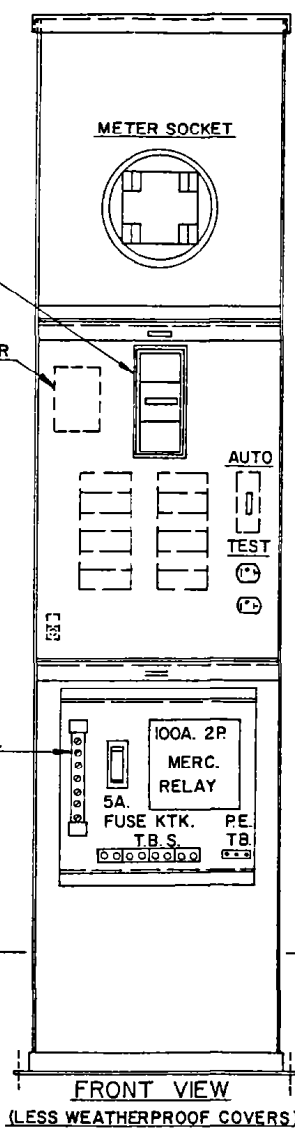
SIDE VIEW



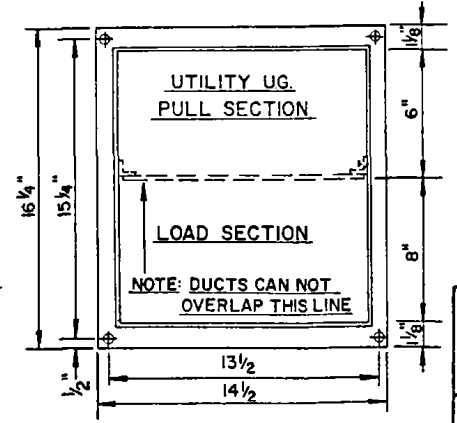
ENCLOSURE

FRONT VIEW

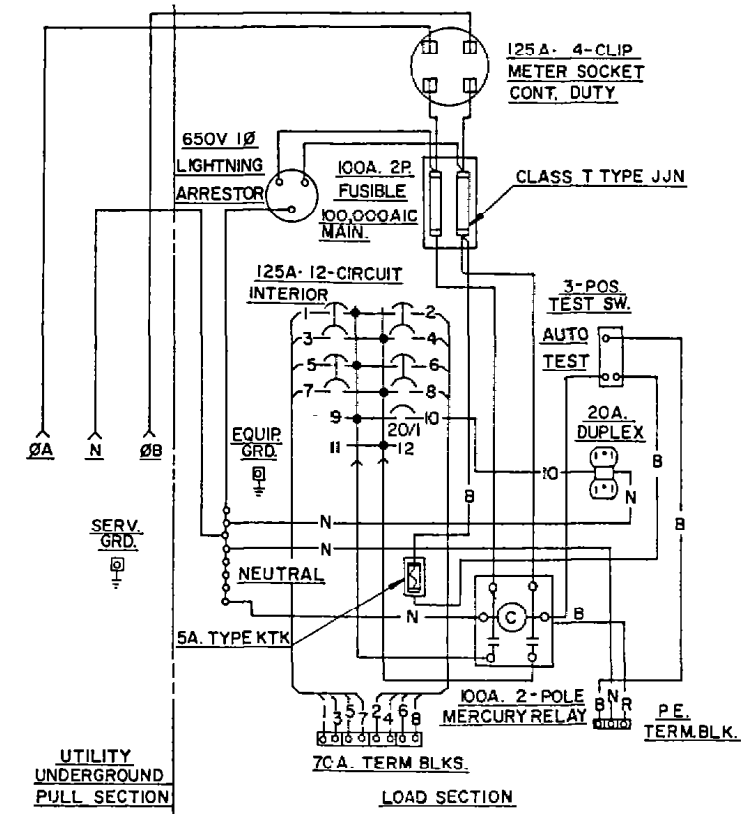
SIDE VIEW



FRONT VIEW (LESS WEATHERPROOF COVERS)



SECTION A A



WIRING DIAGRAM

NOTES:

1. CONSTRUCTION SHALL BE OF CODE GAGE CORROSION RESISTANT STEEL, SHALL BE WEATHERPROOF AND SHALL BE VENTILATED TO PREVENT CONDENSATION.
2. CIRCUIT BREAKER INTERIOR SHALL BE COPPER BUSSED AND PROVIDE FOR TWELVE FULL ONE INCH POLES.
3. ALL TERMINALS SHALL BE APPROVED FOR COPPER OR ALUMINUM WIRE.
4. ALL WIRING SHALL BE COPPER.
5. HINGED DOORS AND REMOVABLE COVERS SHALL BE WEATHERPROOF AND PROVIDE FOR PADLOCKS.
6. THE ENCLOSURE SHALL BE FINISHED WITH ENVIRONMENTAL GREEN BAKED ENAMEL CONFORMING TO ASTM-B117, OVER CORROSION RESISTANT ZINC CHROMATE PRIMER.
7. FOUNDATION CONCRETE SHALL BE MCIB A558-1-2 OR A618-1-4.



AMERICAN PUBLIC WORKS ASSOCIATION  
KANSAS CITY METRO CHAPTER

STREET LIGHTING  
FEED POINT, TYPE A

STANDARD DRAWING  
NUMBER SL-1  
ADOPTED:  
DECEMBER 15, 1982