



# **KANSAS CITY MISSOURI**

**Troost – Truman to Bannister Rd**

# Agenda

- Previous Studies
- Existing Conditions
- Public Engagement
- Next Steps

## Previous Studies

### Row Enhancement Plan 2017

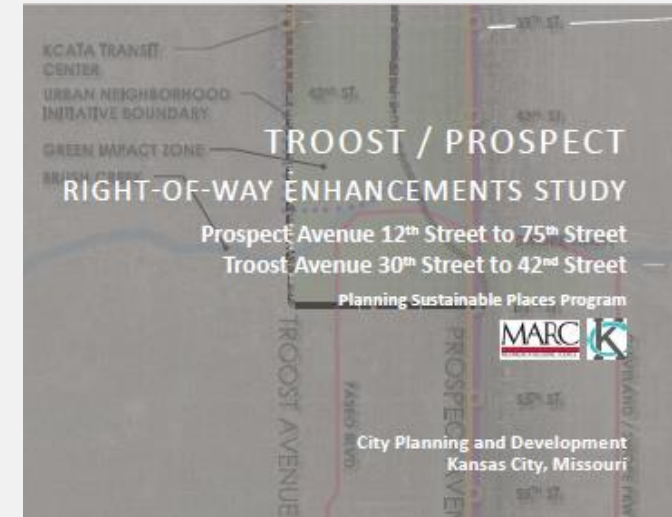
- Suggested improvements like tree-lined streets, enhanced lighting, better intersection designs, and traffic calming measures.

### Troost Streetscape Plan 2008

- The three design concepts presented explored different approaches to **vehicular traffic, pedestrian zones, and street tree planting.**

The alternatives included:

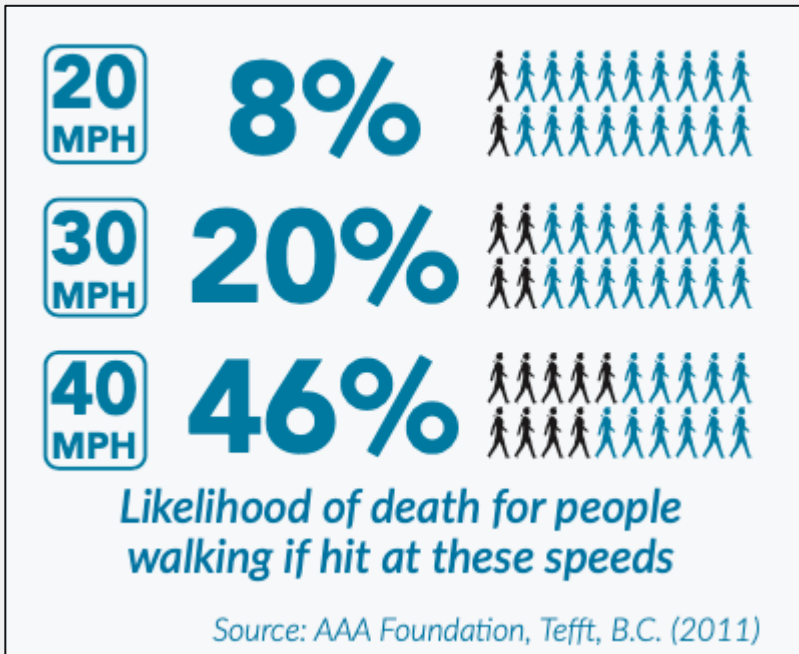
- Common Theme
- District Theme
- Modified District Theme



Troost – Truman to Bannister Rd

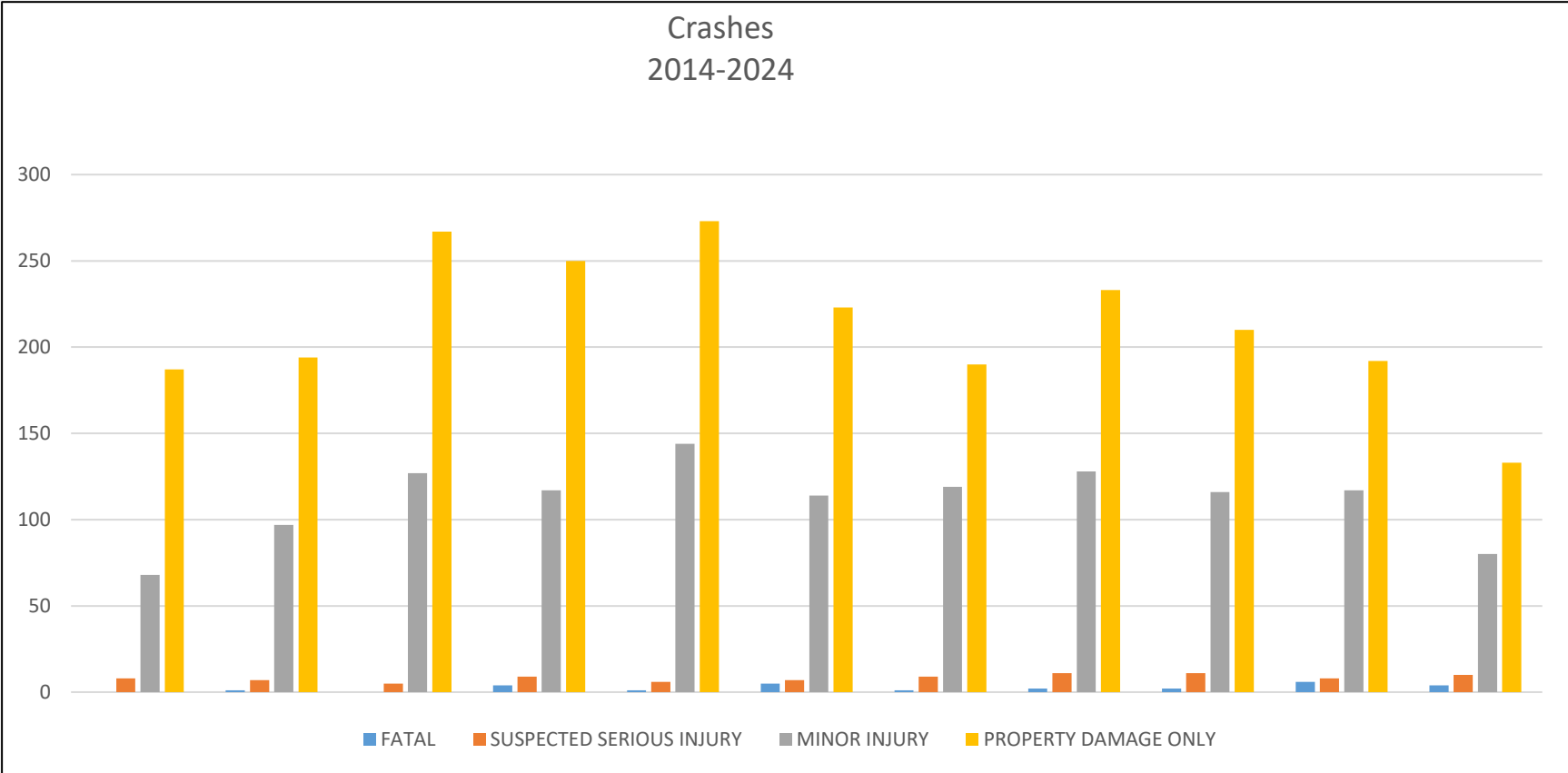
# Traffic Volume & Risk Analysis

- Based on MoDOT Traffic Volume data – the traffic has between **5,000 to 7,000 veh/day** (on both directions of Troost Ave.)
- Troost has a high-risk score of **94**.



Risk Events	Total
<b>Speeding 10mph or Less</b>	<b>75%</b>
<b>Phone Handling</b>	<b>11%</b>
<b>Speeding 10-20mph</b>	<b>11%</b>
<b>Sudden Braking</b>	<b>1.4%</b>
<b>Speeding 20mph or More</b>	<b>0.94%</b>
<b>Sudden Acceleration</b>	<b>0.21%</b>

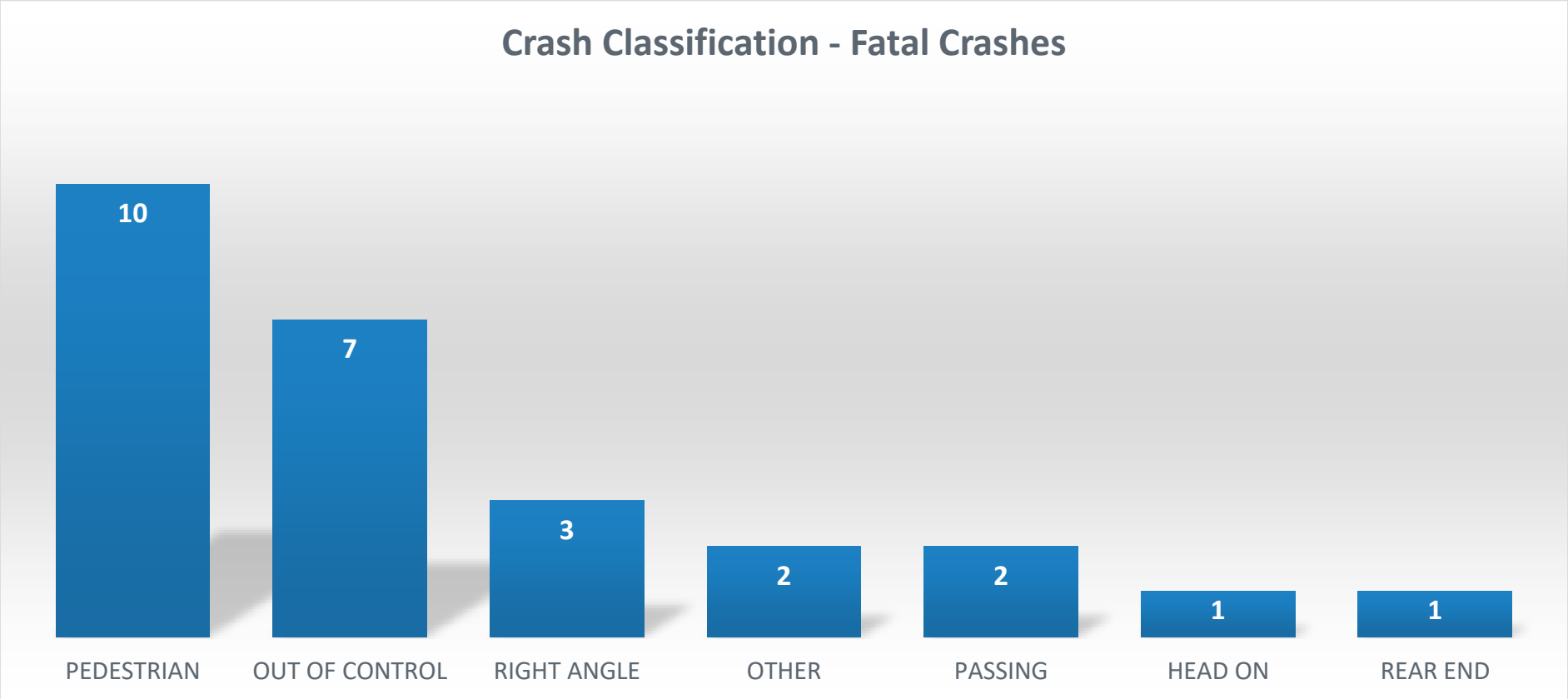
# Crash Data from 2014-2024\*



**Troost – Truman to Bannister Rd**

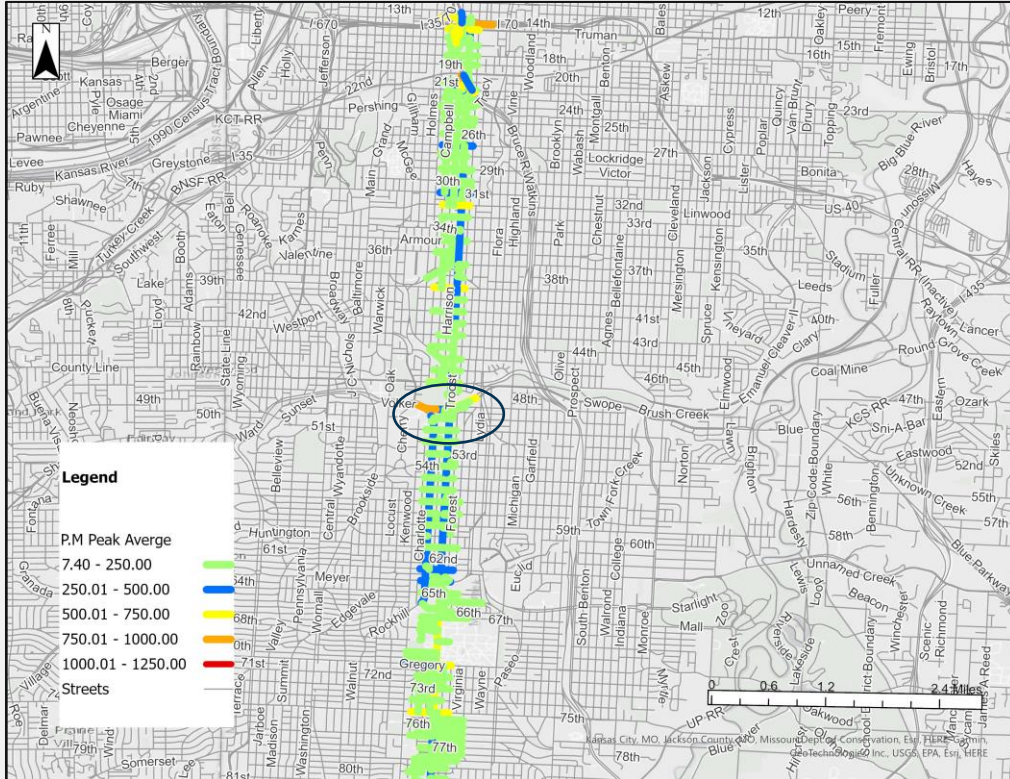
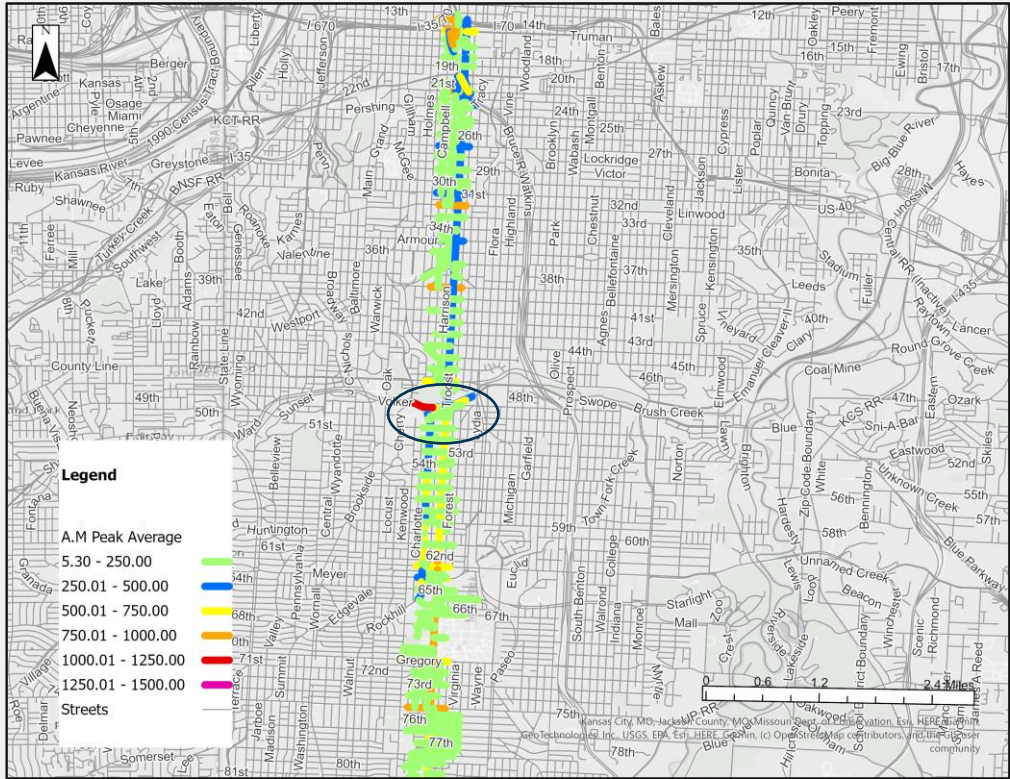


# Crash Data from 2014-2024\*



Troost – Truman to Bannister Rd

# Traffic Flow



Traffic congestion is more prevalent in the morning specifically on Volker 20's thru 31<sup>st</sup> and 73<sup>rd</sup> street.

## Troost – Truman to Bannister Rd – Recent Improvements



- Troost & 24<sup>th</sup> St - Road Diet
- Troost & 31<sup>st</sup> St – Pedestrian Intersection improvements
- Troost & 82<sup>nd</sup> Ter – Pedestrian & Transit Intersection improvements
- Troost – 82<sup>nd</sup> Ter to Bannister - Adding Pedestrian walkways
- Troost & 51<sup>st</sup> – Adding a new Traffic Signal
- Troost near 79<sup>th</sup> St-HAWK signal-installed 2025

# 1<sup>st</sup> Round of Engagement

- Respondents shared areas of concerns, and which ones are priorities on the table.

## *Participation Totals:*

- 37 Open house attendees
- 75 Online Survey responses

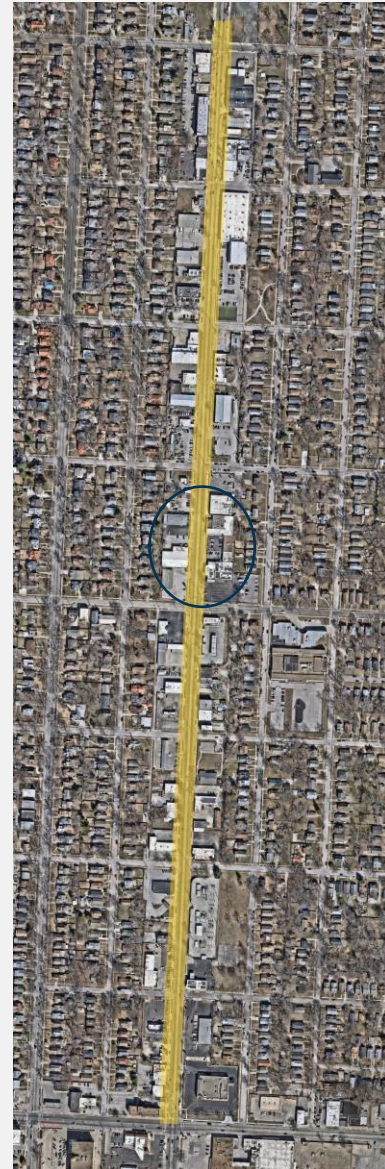
Location	Key Issue	Priority
30 <sup>th</sup> from 31 <sup>st</sup> Streets to Troost	Visual Impair	1 <sup>st</sup> Priority
39 <sup>th</sup> St and Troost Ave	Improve	1 <sup>st</sup> Priority
Troost Ave at Cleaver Blvd and near the corridors of 31 <sup>st</sup> , 35 <sup>th</sup> , 39 <sup>th</sup> , 43 <sup>rd</sup> , and 55 <sup>th</sup> to 57 <sup>th</sup> Streets.	Speeding	1 <sup>st</sup> Priority
41 <sup>st</sup> , 43 <sup>rd</sup> , 47 <sup>th</sup> , MLK, 51 <sup>st</sup> , Gregory, and 75 <sup>th</sup> (and probably others)	Signage and improve	1 <sup>st</sup> Priority
Troost Ave at the following intersections: MLK Blvd, 39 <sup>th</sup> , 50 <sup>th</sup> to 53 <sup>rd</sup> , 55 <sup>th</sup> , 58 <sup>th</sup> , 59 <sup>th</sup> , 63 <sup>rd</sup> , 82 <sup>nd</sup> Ter, and 95 <sup>th</sup> Streets.	Fatality Speeding (Left turns)	1 <sup>st</sup> Priority
Meyer and Troost; 63 <sup>rd</sup> St and Troost Ave	Improve	2 <sup>nd</sup> Priority
51 <sup>st</sup> St and Oak Ave	Signal	2 <sup>nd</sup> Priority
67 <sup>th</sup> St and Troost Ave	Speeding	2 <sup>nd</sup> Priority
75 <sup>th</sup> St and Troost Ave	Speeding	2 <sup>nd</sup> Priority
E. 80 <sup>th</sup> Ter through E. 89 <sup>th</sup> St, including E. 83 <sup>rd</sup> Ter, E. 83 <sup>rd</sup> St, the entrance to The Village Apartments, and the E. 84 <sup>th</sup> St to E. 85 <sup>th</sup> St	Signage and improve	2 <sup>nd</sup> Priority
Troost Ave and E Cleaver II and Troost Ave and MLK	Improve Transition	2 <sup>nd</sup> Priority
Armour Ave and Troost Ave	Signage	2 <sup>nd</sup> Priority
75 <sup>th</sup> and Bannister	Pedestrian Improvements	1 <sup>st</sup> Priority

## Troost – Truman to Bannister Rd

## Pop-event Key Findings

- **Visits:** Most participants use the corridor to access essential services to shop and visit local businesses for entertainment.
- **Concerns:** Unsafe street parking, dangerous pedestrian crossings, reckless driving, and speeding.
- **Improvements:** Pedestrian crossings or refuge islands, lane reductions, permanent parking, and center medians.
- **Safety:** Walking is perceived as unsafe, with strong support for road diets to enhance safety and reduce crashes.

Troost – 55th to 63rd



## **Next Steps**

1. Our team participated in the Troost Equity walk held on Aug 15<sup>th</sup>.
2. Please complete the survey by scanning QR code



**Troost – Truman to Bannister Rd**